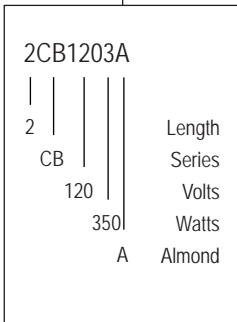


**MODEL CODE:**

**SELECTION:**

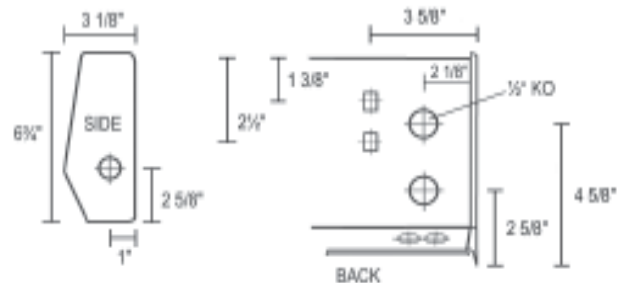
WATTAGE	120V		208V		240V		LENGTH	WT. (lbs.)
	*MODEL	UPC #093319 PART #	*MODEL	UPC #093319 PART #	*MODEL	UPC #093319 PART #		
350	2CB1203A	11200	2CB2003A	11250	2CB2403A	11305	27"	8
500	3CB1205A	11210	3CB2005A	11260	3CB2405A	11315	3 ft.	10
750	4CB1207A	11220	4CB2007A	11270	4CB2407A	11325	4 ft.	14
1000	5CB1210A	11230	5CB2010A	11280	5CB2410A	11335	5 ft.	16
1250	6CB1212A	11240	6CB2012A	11286	6CB2412A	11345	6 ft.	19
1500			8CB2015A	11295	8CB2415A	11355	8 ft.	25

\* Add suffix (-BW) for optional bright white finish

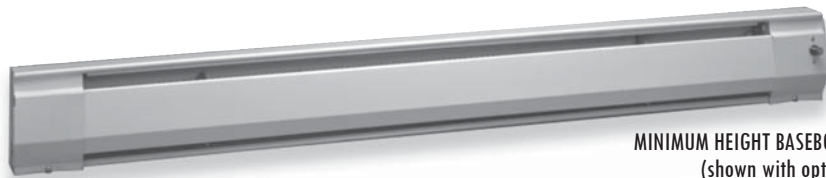
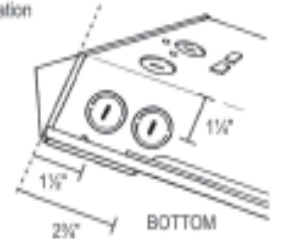
**ACCESSORIES:**

*MODEL	DESCRIPTION	UPC #093319 PART #	WT. (lbs.)
BKT1	Built-in Single Pole Single Throw Thermostat Kit	11496	.5
BKT2	Built-in Double Pole Single Throw Thermostat Kit	11502	.5
BKT1TP	Built-in Tamperproof Single Pole Single Throw Thermostat Kit	11528	.5
BKT2TP	Built-in Tamperproof Double Pole Single Throw Thermostat Kit	11530	.5

\* Add suffix (-BW) for optional bright white finish

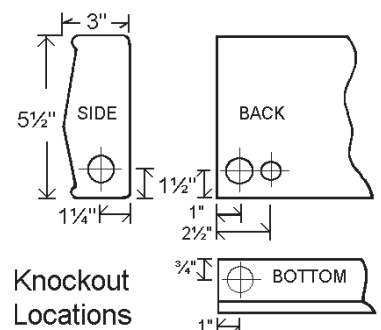
**DIMENSIONS:**


⊕ = Knockout Location


**MINIMUM HEIGHT BASEBOARD**  
(shown with optional BTA-1 installed)

**SELECTION:**

WATTAGE	208V	240V	LENGTH	WT. (lbs.)
	MODEL	MODEL		
335	2M2003	2M2403	27"	7
500	3M2005	3M2405	3ft.	9
670	4M2006	4M2406	4ft.	13
835	5M2008	5M2408	5ft.	15
1000	6M2010	6M2410	6ft.	18
1170	7M2011	7M2411	7ft.	21
1350	8M2013	8M2413	8ft.	24
1675	10M2016	10M2416	10ft.	29
ACCESSORIES				
MODEL	DESCRIPTION		UPC PART #	WT.
BTA-1	Baseboard Single Pole Thermostat Kit		10186	.5
BTA-2	Baseboard Double Pole Thermostat Kit		10192	.5
BTA-1TP	Baseboard Tamperproof Single Pole Thermostat Kit		10195	.5
BTA-2TP	Baseboard Tamperproof Double Pole Thermostat Kit		10196	.5

**DIMENSIONS:**


Knockout Locations

**FEATURES:**

- Convection Heat
- Ceramic Element
- Quiet-running

- 5 1/2" tall
- No wireway
- Non-stock item